

CoC Racial Equity Analysis Tool (version 3.0)

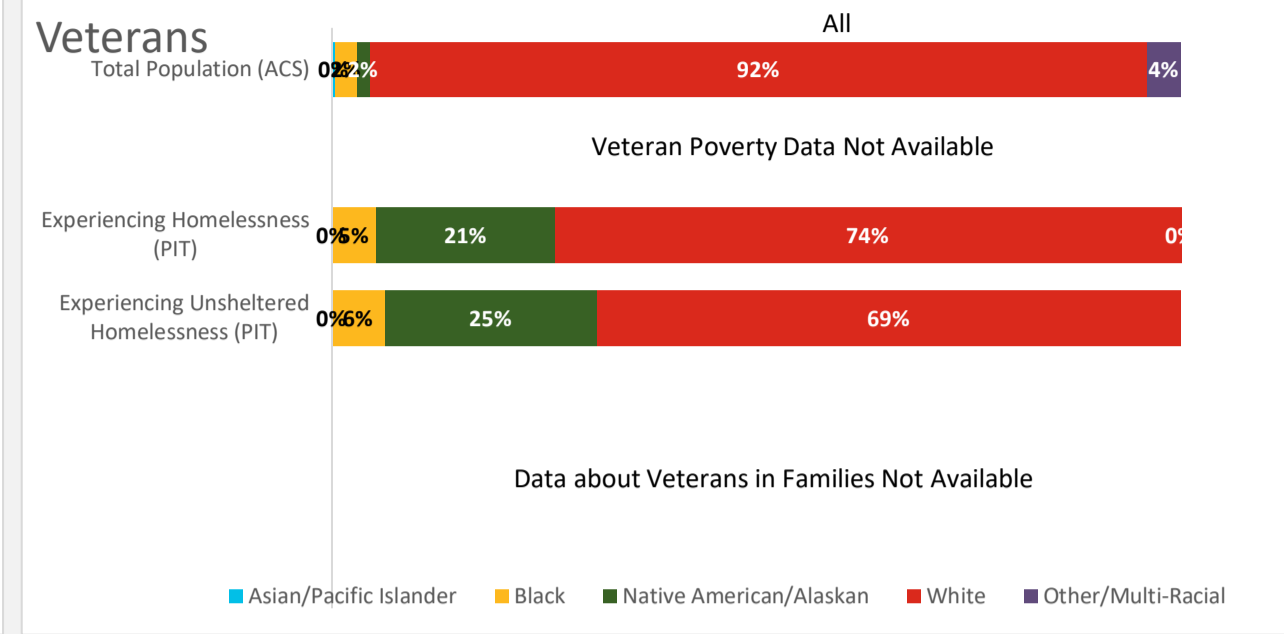
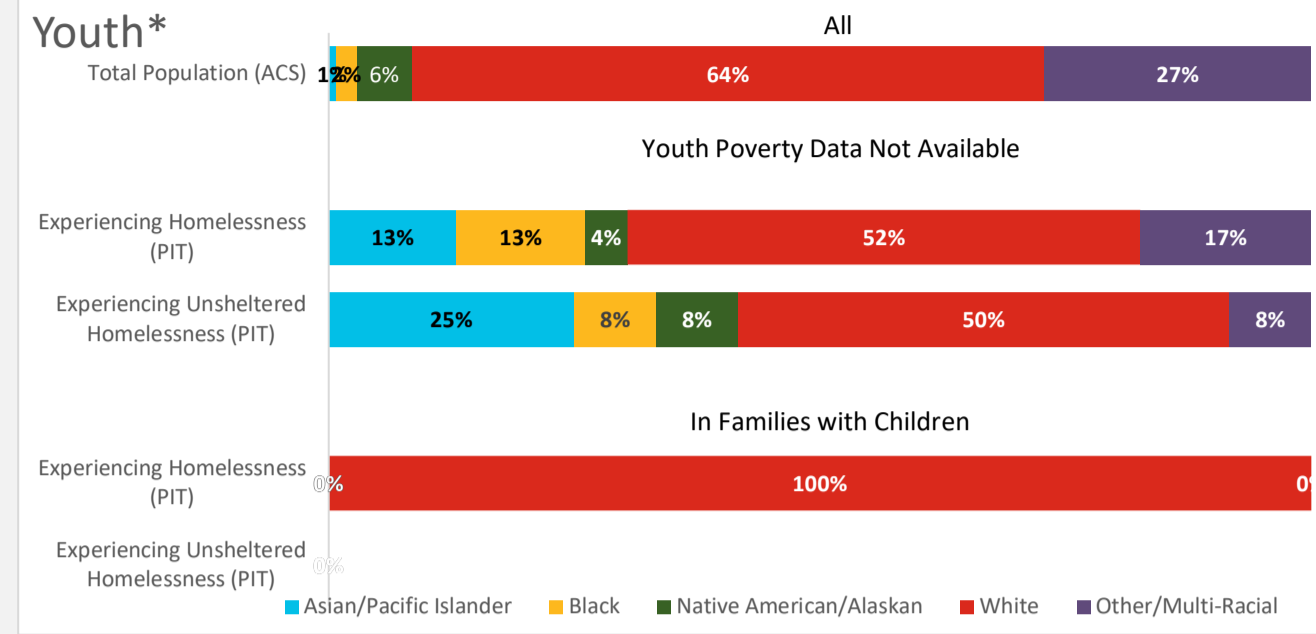
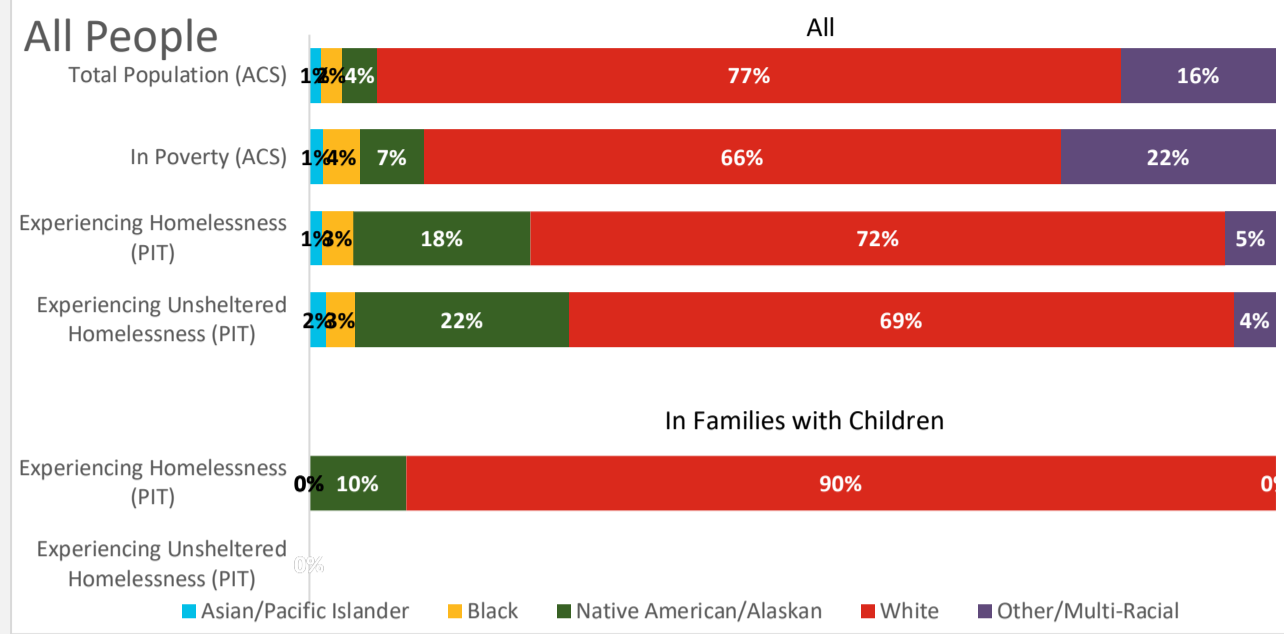
Homelessness and poverty counts at the CoC and State level

Select your CoC

CA-529

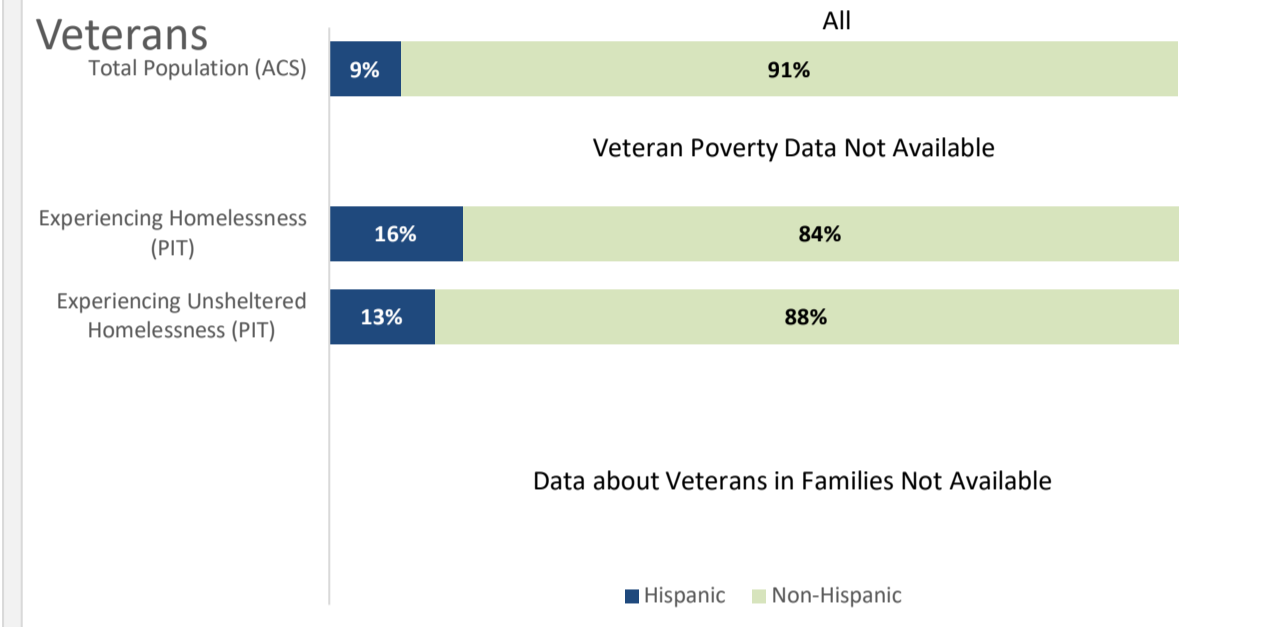
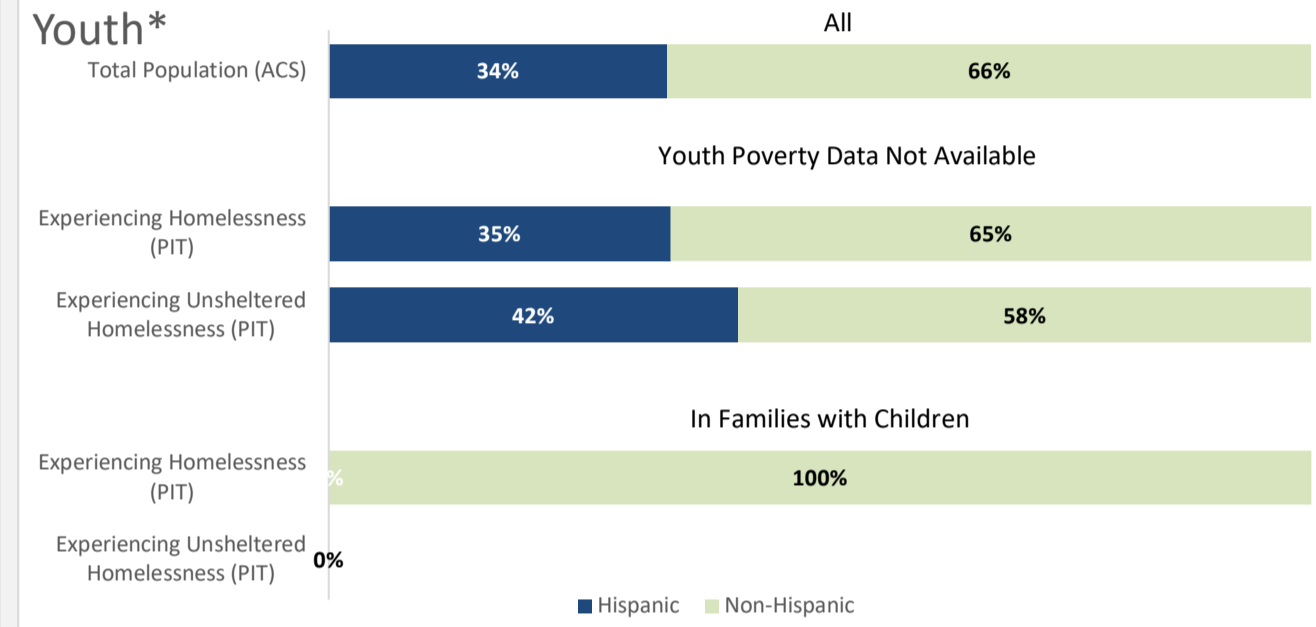
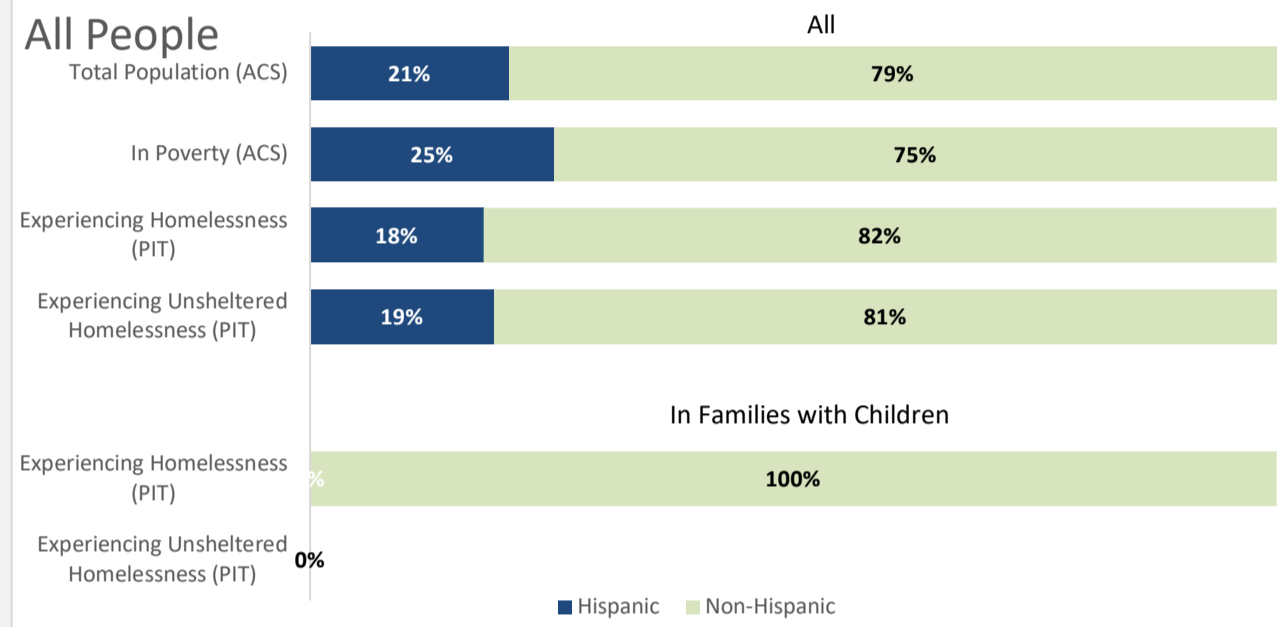
Lake County CoC

CoC Distribution of Race



*Youth experiencing homelessness is limited to unaccompanied and parenting persons under 25.

CoC Distribution of Ethnicity



*Youth experiencing homelessness is limited to unaccompanied and parenting persons under 25.

CoC Data

Race and Ethnicity	Total Population (ACS) ¹				In Poverty (ACS) ¹				Experiencing Homelessness (PIT) ²				Experiencing Sheltered Homelessness (PIT) ²				Experiencing Unsheltered Homelessness (PIT) ²					
	All		In Families with Children		All		In Families with Children		All		In Families with Children		All		In Families with Children		All		In Families with Children			
	#	%	#	%	#	%	#	%	#	%	#	%	#	%	#	%	#	%	#	%		
All People	64,195		23,177		11,753		5,430		306		10		75		10		231		NOT AVAILABLE			
Race																						
Asian/Pacific Islander	765	1%	237	1%	168	1%	56	1%	4	1%	0	0%	0	0%	0	0%	4	2%	--	--		
Black	1,447	2%	739	3%	452	4%	427	8%	10	3%	0	0%	3	4%	0	0%	7	3%	--	--		
Native American/Alaskan	2,310	4%	1,677	7%	773	7%	865	16%	56	18%	1	10%	5	7%	1	10%	51	22%	--	--		
White	49,389	77%	15,150	65%	7,747	66%	2,608	48%	220	72%	9	90%	61	81%	9	90%	159	69%	--	--		
Other/Multi-Racial	10,284	16%	5,374	23%	2,613	22%	1,474	27%	16	5%	0	0%	6	8%	0	0%	10	4%	--	--		
Ethnicity																						
Hispanic	13,224	21%	7,180	31%	2,972	25%	1,772	33%	55	18%	0	0%	11	15%	0	0%	44	19%	--	--		
Non-Hispanic	50,971	79%	15,997	69%	8,781	75%	3,657	67%	251	82%	10	100%	64	85%	10	100%	187	81%	--	--		
Youth <25	17,769		NOT AVAILABLE				23		1		11		1		12							
Race																						
Asian/Pacific Islander	128	1%	--	--	--	--	--	--	3	13%	0	0%	0	0%	0	0%	3	25%	--	--		
Black	389	2%	--	--	--	--	--	--	3	13%	0	0%	2	18%	0	0%	1	8%	--	--		
Native American/Alaskan	987	6%	--	--	--	--	--	--	1	4%	0	0%	0	0%	0	0%	1	8%	--	--		
White	11,439	64%	--	--	--	--	--	--	12	52%	1	100%	6	55%	1	100%	6	50%	--	--		
Other/Multi-Racial	4,826	27%	--	--	--	--	--	--	4	17%	0	0%	3	27%	0	0%	1	8%	--	--		
Ethnicity																						
Hispanic	6,126	34%	--	--	--	--	--	--	8	35%	0	0%	3	27%	0	0%	5	42%	--	--		
Non-Hispanic	11,643	66%	--	--	--	--	--	--	15	65%	1	100%	8	73%	1	100%	7	58%	--	--		
Veterans	4,955		NOT AVAILABLE				19		3		3		3		16							
Race																						
Asian/Pacific Islander	23	0%	--	--	--	--	--	--	0	0%	--	--	0	0%	--	--	0	0%	--	--		
Black	122	2%	--	--	--	--	--	--	1	5%	--	--	0	0%	--	--	1	6%	--	--		
Native American/Alaskan	79	2%	--	--	--	--	--	--	4	21%	--	--	0	0%	--	--	4	25%	--	--		
White	4,536	92%	--	--	--	--	--	--	14	74%	--	--	3	100%	--	--	11	69%	--	--		
Other/Multi-Racial	195	4%	--	--	--	--	--	--	0	0%	--	--	0	0%	--	--	0	0%	--	--		
Ethnicity																						
Hispanic	423	9%	--	--	--	--	--	--	3	16%	--	--	1	33%	--	--	2	13%	--	--		
Non-Hispanic	4,532	91%	--	--	--	--	--	--	16	84%	--	--	2	67%	--	--	14	88%	--	--		

Sources:

¹ American Community Survey (ACS) 2015-2019 5-yr estimates

² Point-In-Time (PIT) 2021 data

† Sum of all reported data

Note:

- Race estimates of individuals in families with children are based on the race of the householder.

- Youth counts from the ACS data are rollups of race estimates of the number of households with householders under 25 years old, a proxy for unaccompanied youth. Youth counts from the PIT data are estimates of the number of unaccompanied youth and parenting persons under 25 years old.

- CoC's that are missing demographic data, such as age or race, for a portion of the households in their PIT Count are required by HUD to extrapolate to account for and report on their demographic characteristics.

State Data for California

Race and Ethnicity	All (ACS) ¹				In Poverty (ACS) ¹				Experiencing Homelessness (PIT) ^{2+†}			
	All		In Families with Children		All		In Families with Children		All		In Families with Children	
	#	%	#	%	#	%	#	%	#	%	#	%
All People	39,283,497		16,900,288		5,149,742		2,584,994		57,013		20,746	
Race												
Asian/Pacific Islander	5,847,713	15%	2,455,875	15%	592,257	12%	208,299	8%	1,910	3%	553	3%
Black	2,274,108	6%	929,316	5%	446,672	9%	217,222	8%	17,122	30%	6,947	33%
Native American/Alaskan	303,998	1%	166,425	1%	57,434	1%	38,158	1%	1,729	3%	432	2%
White	23,453,222	60%	9,467,866	56%	2,814,013	55%	1,329,327	51%	33,081	58%	11,378	55%
Other/Multi-Racial	7,404,456	19%	3,880,806	23%	1,239,366	24%	791,989	31%	3,171	6%	1,436	7%
Ethnicity												
Hispanic	15,327,688	39%	8,511,489	50%	2,660,658	52%	1,770,002	68%	19,600	34%	9,953	48%
Non-Hispanic	23,955,809	61%	8,388,799	50%	2,489,084	48%	814,992	32%	37,413	66%	10,793	52%
Youth <25	12,811,954		NOT AVAILABLE		1,574,098		NOT AVAILABLE		3,495		750	
Race												
Asian/Pacific Islander	1,561,260	12%	--	--	9,020	1%	--	--	107	3%	11	1%
Black	729,126	6%	--	--	189,856	12%	--	--	1,256	36%	287	38%
Native American/Alaskan	104,180	1%	--	--	25,715	2%	--	--	115	3%	12	2%
White	7,135,172	56%	--	--	1,210,379	77%	--	--	1,765	51%	385	51%
Other/Multi-Racial	3,282,216	26%	--	--	139,128	9%	--	--	252	7%	55	7%
Ethnicity												
Hispanic	6,513,849	51%	--	--	1,428,068	91%	--	--	1,399	40%	365	49%
Non-Hispanic	6,298,105	49%	--	--	146,030	9%	--	--	2,096	60%	385	51%
Veterans	1,402,876		NOT AVAILABLE		NOT AVAILABLE		NOT AVAILABLE		3,351		NOT AVAILABLE	
Race												
Asian/Pacific Islander	7,148	1%	--	--	--	--	--	--	104	3%	--	--
Black	151,154	11%	--	--	--	--	--	--	1,000	30%	--	--
Native American/Alaskan	14,371	1%	--	--	--	--	--	--	100	3%	--	--
White	1,174,500	84%	--	--	--	--	--	--	2,009	60%	--	--
Other/Multi-Racial	55,703	4%	--	--	--	--	--	--	138	4%	--	--
Ethnicity												
Hispanic	263,369	19%	--	--	--	--	--	--	544	16%	--	--
Non-Hispanic	1,139,507	81%	--	--	--	--	--	--	2,807	84%	--	--